



# Tips for Installing OpenSolaris

Roman Strobl  
OpenSolaris Evangelist  
<http://blogs.sun.com/observatory>

---

# Installing OpenSolaris

---

- Two main options:
  - Bare metal install (dual boot)
  - Install into VirtualBox
- Each method has advantages and disadvantages
  - Bare metal
    - Best user experience, best performance, you really use the OS
    - Potential driver issues
  - VirtualBox
    - Safest and easiest installation
    - No driver issues

# Installation process (bare metal)

---

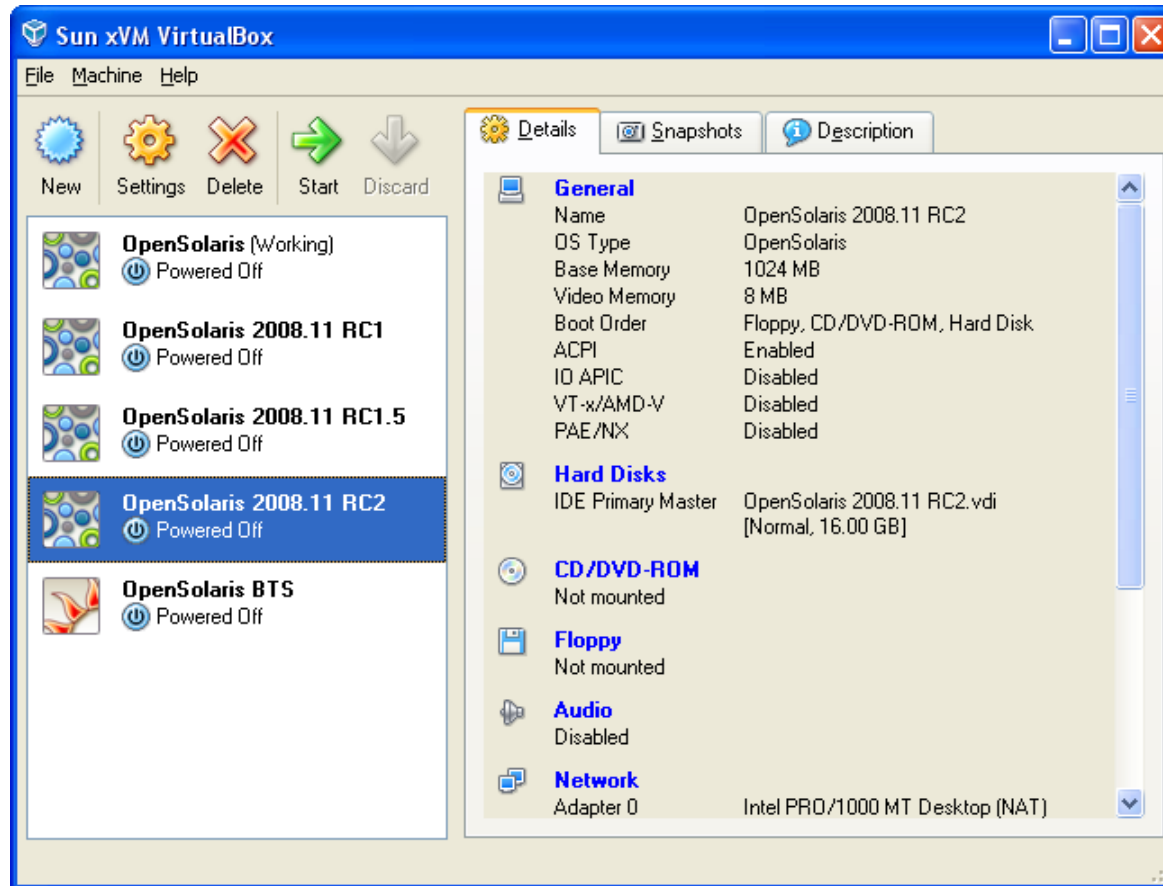
- Backup your data
- Backup your boot loader configuration
- Create one free primary Solaris partition
- Boot from Live CD
- Choose to install into the Solaris partition
- Perform installation
- Fix potential boot issues
  - No issues Windows + OpenSolaris
  - Linux requires manual update of GRUB conf.

# Installation process (VirtualBox)

---

- Install VirtualBox
- Configure a new virtual machine
- Mount OpenSolaris ISO image
- Start virtual machine
- Choose to install into whole disk
- Perform installation
- Unmount ISO image

# Tip #1 – If you are a “newbie”



Start with VirtualBox install

# Tip #2 – Do I have drivers for bare metal installation?

Applications Places System

OpenSolaris-2008-05

Device Driver Utility

Getting Started With OpenSolaris 2008.05

Install OpenSolaris

**Device Driver Utility**

Refresh **Driver Problems: 2**

Types	Components	Driver
Audio	Intel Corporation 82801H (ICH8 Family) HD Audio Controller	audiohd
DVD	Intel Corporation 82801HBM/HEM (ICH8M/ICH8M-E) IDE Controller	pci-ide
	MATSHITA DVD-RAM UJ-852S	sd
Network	Marvell Technology Group Ltd. 88E8055 PCI-E Gigabit Ethernet Controller	yukonx
	Intel Corporation PRO/Wireless 4965 AG or AGN Network Connection	iwk
Storage		

**Driver Information**

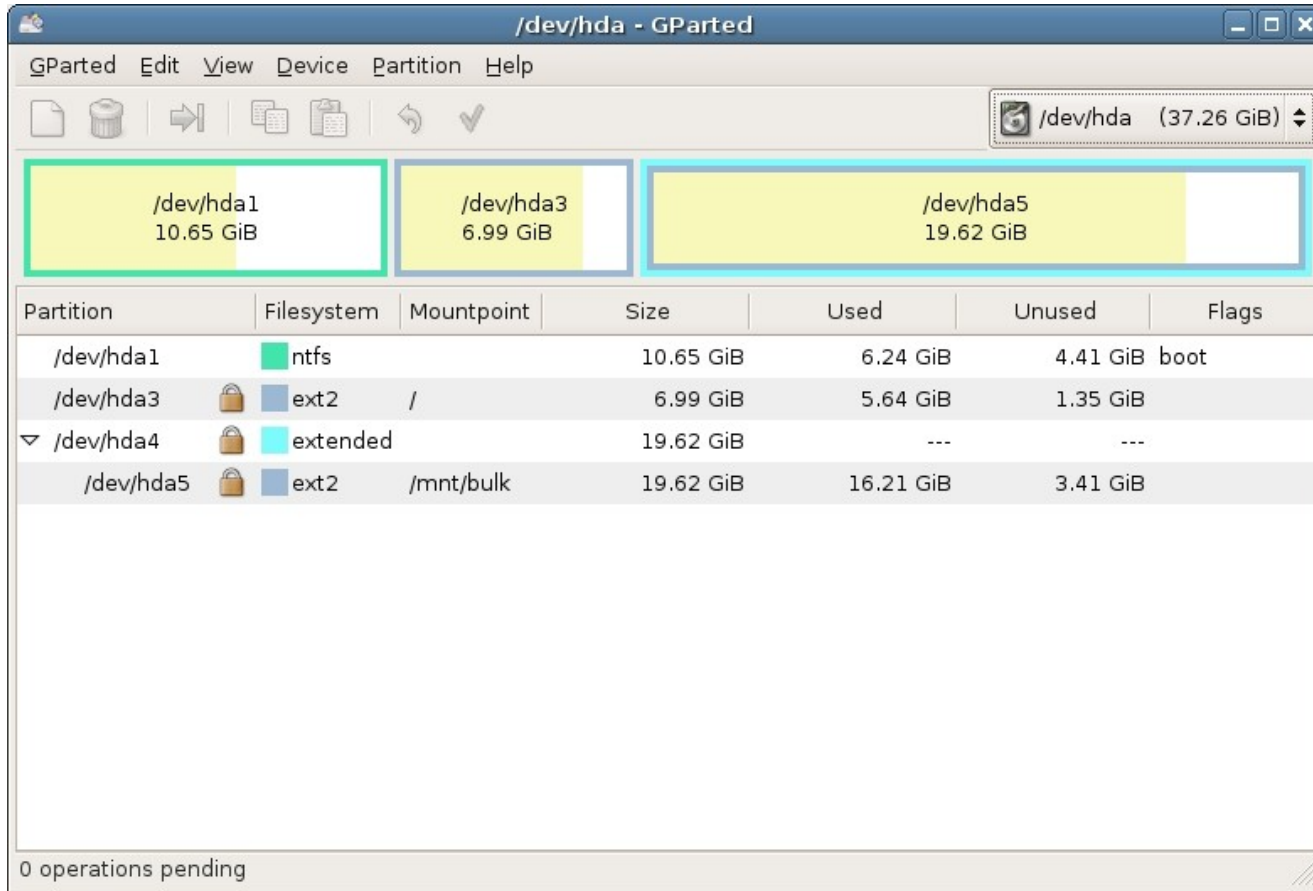
**Driver:** audiohd  
**Instance:** 0  
**Attach Status:** Attached

**Hardware Information**

**Vendor ID:** 0x8086  
**Device ID:** 0x284b  
**Class Code:** 00040300  
**DevPath:** /pci@0,0/pci104d,9008@1b

Help Submit... Install Driver Close

# Tip #3 – The best way to repartition the disk



## Use GParted

# Tip #4 – Saving Linux GRUB configuration

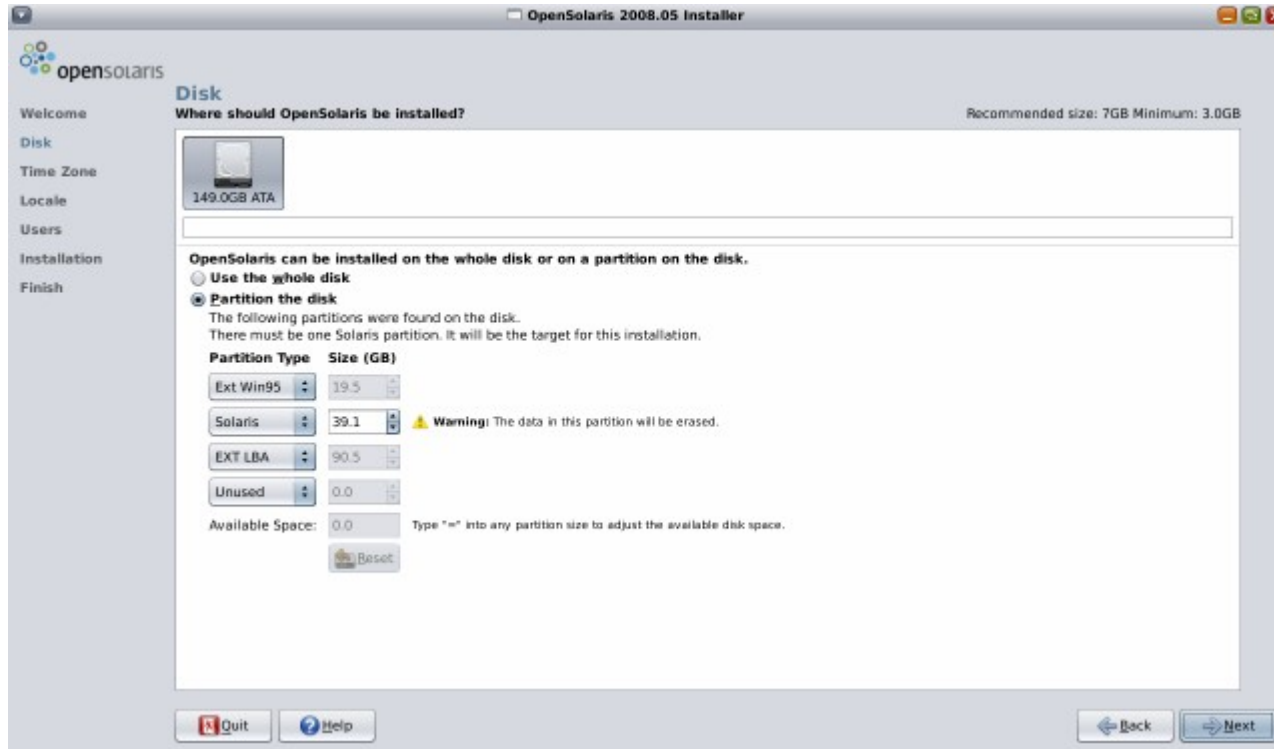
---



Copy /boot/grub/menu.lst to a USB stick

# Tip #5 – Avoid repartitioning using OpenSolaris installer

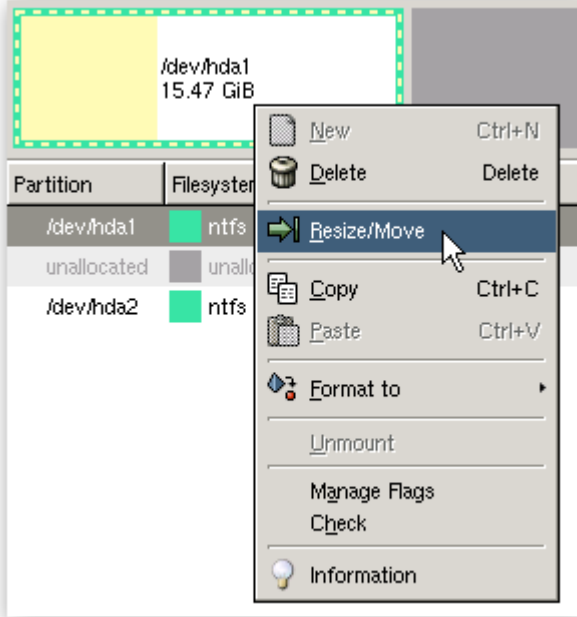
---



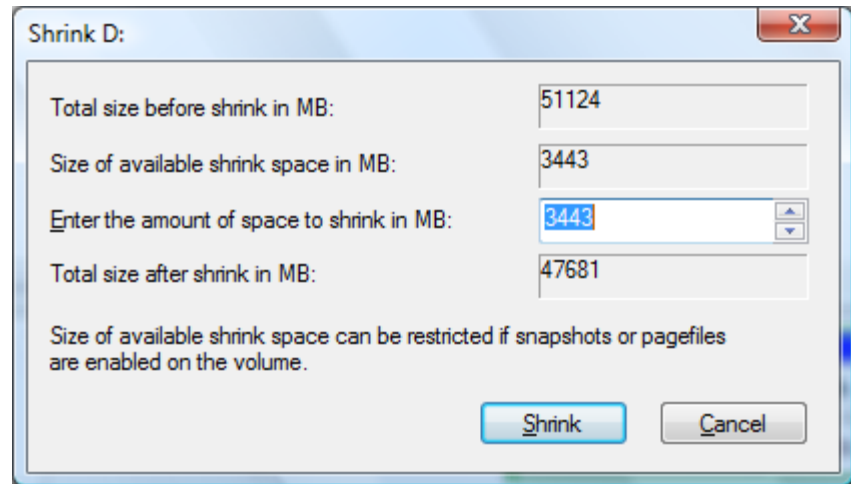
Use external tool (Linux fdisk, GParted, ...)

# Tip #6 – Resizing a Windows partition

---



GParted (slow)



Shrink on Vista

## Tip #7 – Triple boot :)

---

- Install Windows
- Install Linux
  - Make a backup of GRUB menu.lst
- Install OpenSolaris
  - Boot loader gets overwritten
  - Add Linux' menu.lst items into `/rpool/boot/grub/menu.lst`

## Tip #8 – Mac bare metal install

---

- Possible, but not simple
- Repartition using Mac tools
- rEFIt used for boot menu
- Follow these instructions:
  - [http://weblogs.java.net/blog/bleonard/archive/2008/05/\\_opensolaris\\_20.html](http://weblogs.java.net/blog/bleonard/archive/2008/05/_opensolaris_20.html)

# Resources

---

- Installation guide
  - <http://dlc.sun.com/osol/docs/content/IPS/sliminstall.htm>
- VirtualBox installation guide
  - <http://dlc.sun.com/osol/docs/content/IPS/virtualbox.html>
- Installing using Parallels
  - <http://dlc.sun.com/osol/docs/content/IPS/parallels.html>
- Install FAQ
  - <http://wikis.sun.com/display/OpenSolaris/OpenSolaris0811InstallationFAQ>
- OpenSolaris documentation
  - <http://opensolaris.org/os/community/documentation>



Thank you!

Roman Strobl  
OpenSolaris Evangelist  
<http://blogs.sun.com/observatory>

---