



Tips for Installing OpenSolaris

Roman Strobl
OpenSolaris Evangelist
<http://blogs.sun.com/observatory>

Installing OpenSolaris

- Two main options:
 - Bare metal install (dual boot)
 - Install into VirtualBox
- Each method has advantages and disadvantages
 - Bare metal
 - Best user experience, best performance, you really use the OS
 - Potential driver issues
 - VirtualBox
 - Safest and easiest installation
 - No driver issues

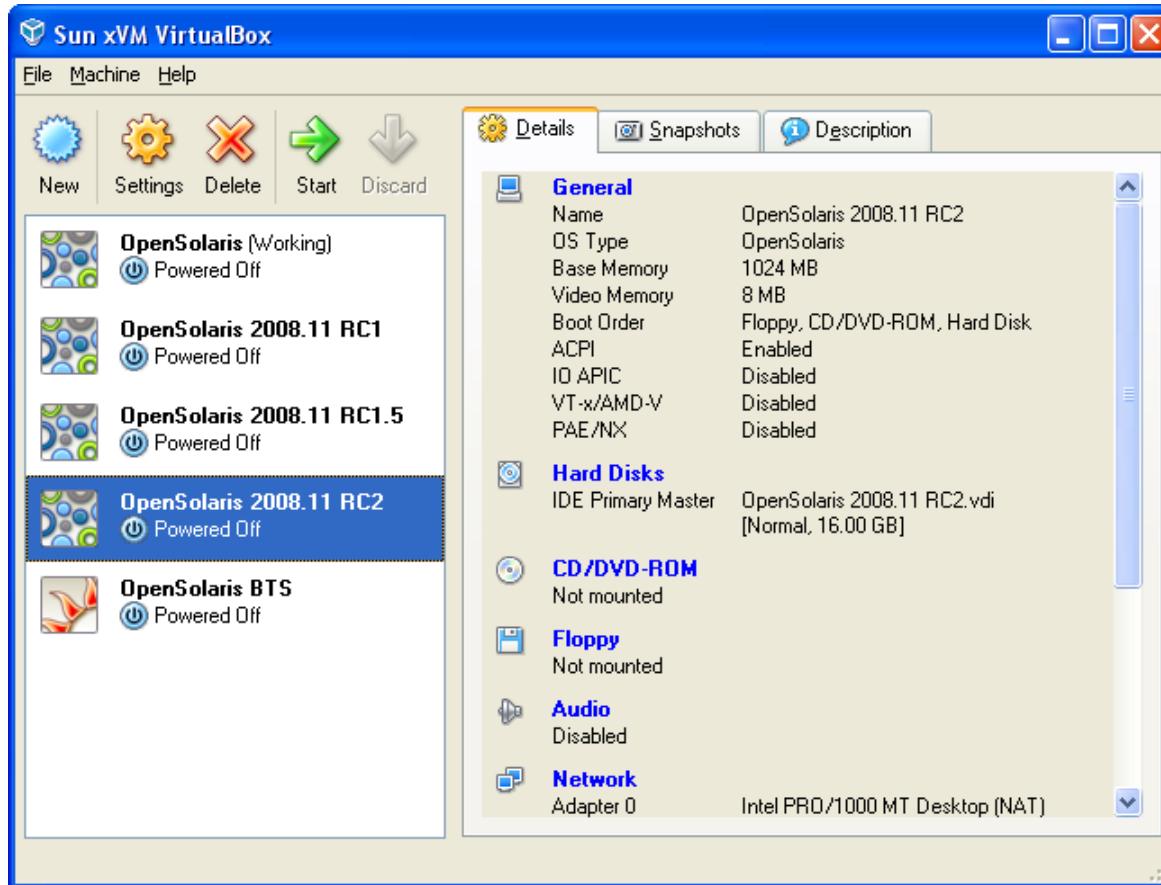
Installation process (bare metal)

- Backup your data
- Backup your boot loader configuration
- Create one free primary Solaris partition
- Boot from Live CD
- Choose to install into the Solaris partition
- Perform installation
- Fix potential boot issues
 - No issues Windows + OpenSolaris
 - Linux requires manual update of GRUB conf.

Installation process (VirtualBox)

- Install VirtualBox
- Configure a new virtual machine
- Mount OpenSolaris ISO image
- Start virtual machine
- Choose to install into whole disk
- Perform installation
- Unmount ISO image

Tip #1 – If you are a “newbie”



Start with VirtualBox install

Tip #2 – Do I have drivers for bare metal installation?

The screenshot shows the OpenSolaris 2008.05 desktop environment. In the application menu, a green arrow points to the 'Device Driver Utility' icon. The 'Device Driver Utility' window is open, displaying a table of hardware components and their drivers. A red warning icon indicates 'Driver Problems: 2'.

Types	Components	Driver
Audio	Intel Corporation 82801H (ICH8 Family) HD Audio Controller	audiohd
DVD	Intel Corporation 82801HBM/HEM (ICH8M/ICH8M-E) IDE Controller	pci-ide
	MATSHITA DVD-RAM UJ-852S	sd
Network	Marvell Technology Group Ltd. 88E8055 PCI-E Gigabit Ethernet Controller	yukonx
	Intel Corporation PRO/Wireless 4965 AG or AGN Network Connection	iwk
Storage		

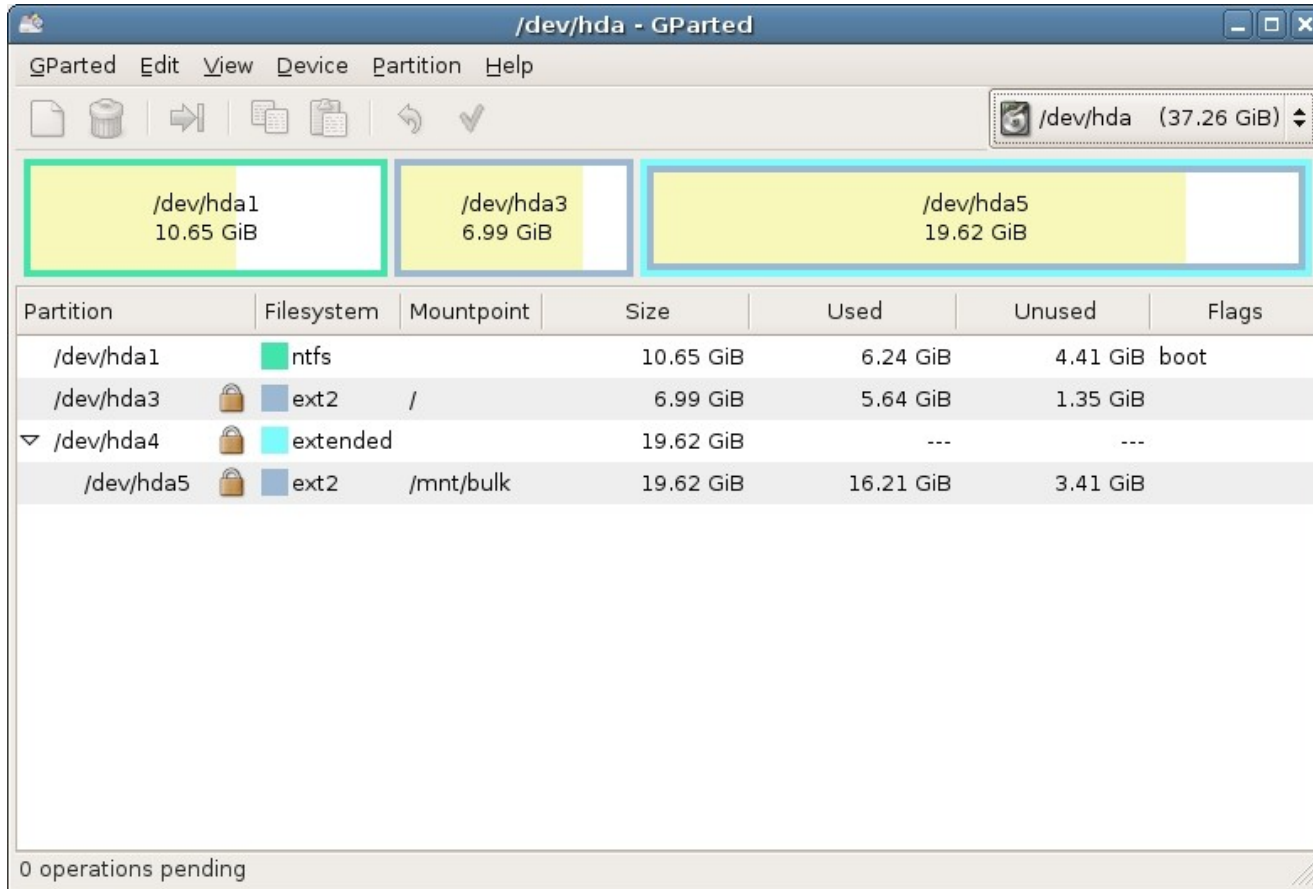
Driver Information

Driver: audiohd
Instance: 0
Attach Status: Attached

Hardware Information

Vendor ID: 0x8086
Device ID: 0x284b
Class Code: 00040300
DevPath: /pci@0,0/pci104d,9008@1b

Tip #3 – The best way to repartition the disk



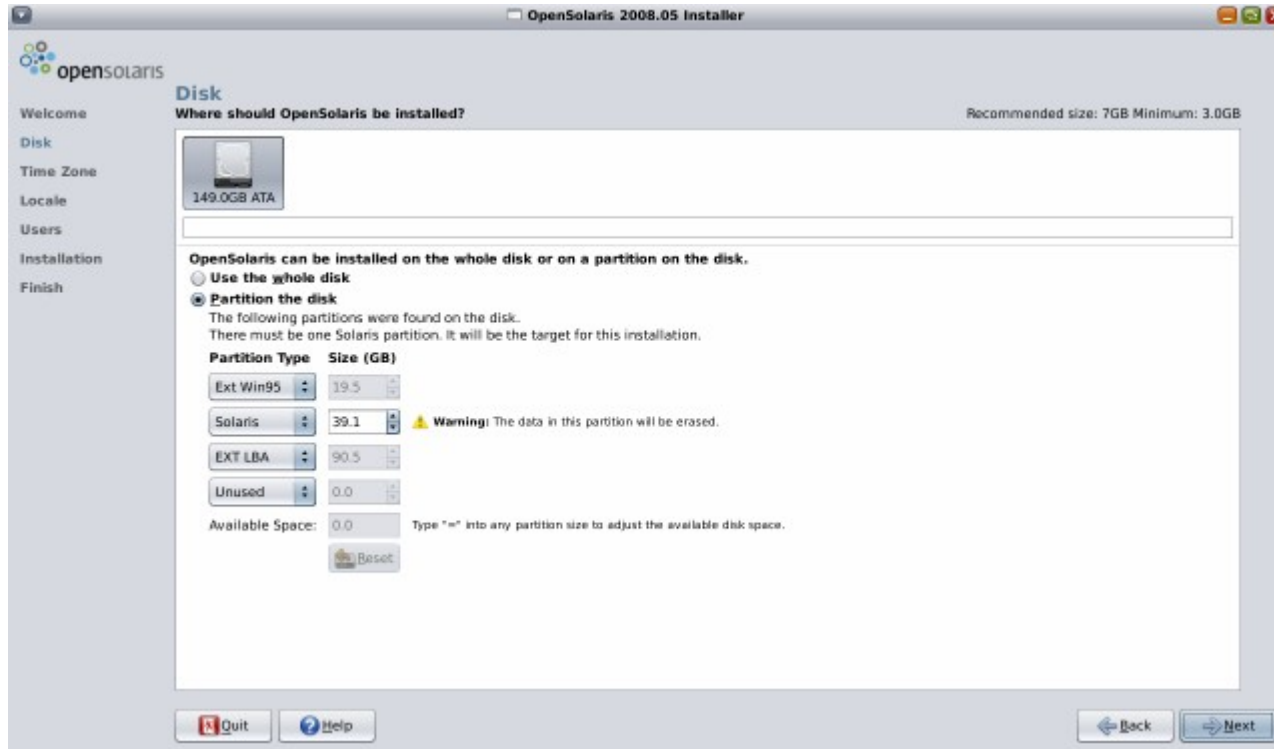
Use GParted

Tip #4 – Saving Linux GRUB configuration



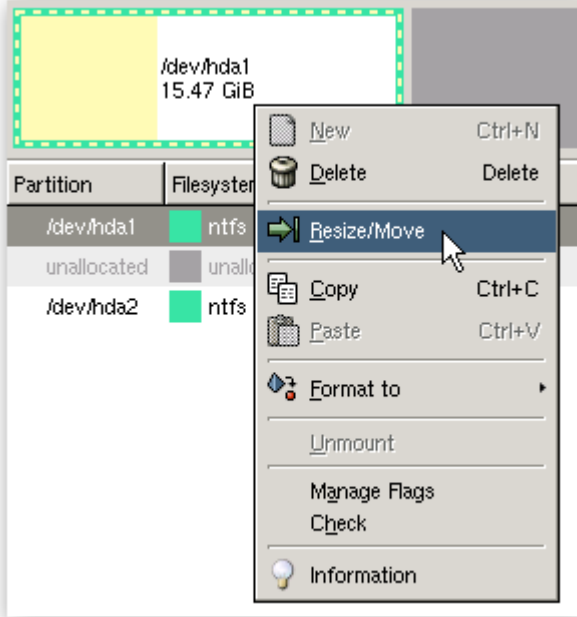
Copy `/boot/grub/menu.lst` to a USB stick

Tip #5 – Avoid repartitioning using OpenSolaris installer

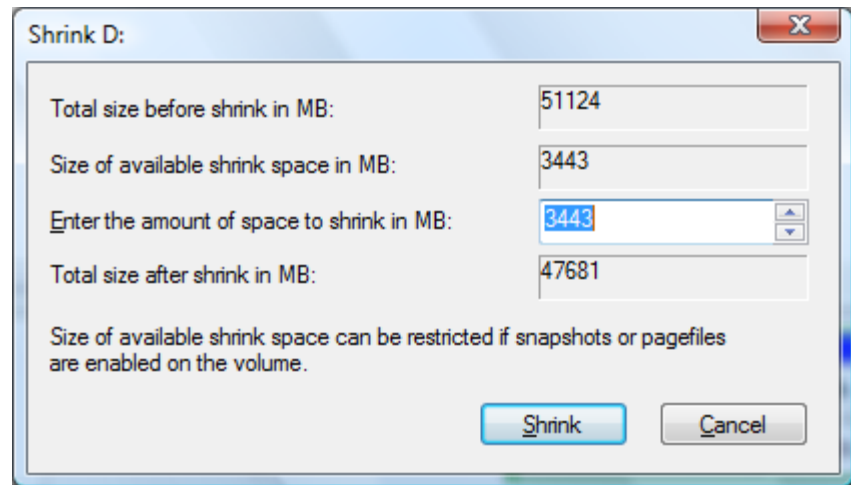


Use external tool (Linux fdisk, GParted, ...)

Tip #6 – Resizing a Windows partition



GParted (slow)



Shrink on Vista

Tip #7 – Triple boot :)

- Install Windows
- Install Linux
 - Make a backup of GRUB menu.lst
- Install OpenSolaris
 - Boot loader gets overwritten
 - Add Linux' menu.lst items into /rpool/boot/grub/menu.lst

Tip #8 – Mac bare metal install

- Possible, but not simple
- Repartition using Mac tools
- rEFIt used for boot menu
- Follow these instructions:
 - http://weblogs.java.net/blog/bleonard/archive/2008/05/_opensolaris_20.html

HW Requirements

- CPU: 2.0+ Ghz, x86 or x64
- Memory
 - 512 MB minimum
 - 1 GB recommended
 - 2 GB for VirtualBox
- Disk space
 - 6 GB minimum
 - 10 GB recommended

Resources

- Installation guide
 - <http://dlc.sun.com/osol/docs/content/IPS/sliminstall.htm>
- VirtualBox installation guide
 - <http://dlc.sun.com/osol/docs/content/IPS/virtualbox.html>
- Installing using Parallels
 - <http://dlc.sun.com/osol/docs/content/IPS/parallels.html>
- Install FAQ
 - <http://wikis.sun.com/display/OpenSolaris/OpenSolaris0811InstallationFAQ>
- OpenSolaris documentation
 - <http://opensolaris.org/os/community/documentation>



Thank you!

Roman Strobl
OpenSolaris Evangelist
<http://blogs.sun.com/observatory>
